

Creation versus Evolution Refresher

Sunday, 23Nov25

Evening Bible Class



1. Define the “Theory of Evolution”.

Theory that millions of years ago, lifeless matter gave origin to small living things which have evolved into all living animals including man.

2. What are 4 characteristics of evolution?

- a) Self-starting, self-improving, self-contained and self-explained.
- b) No need for God.
- c) Special kind of change.
- d) Process is taking place today.

3. Which of the following pictures are either connected to or related to Evolution?

Origin of Universe Without God

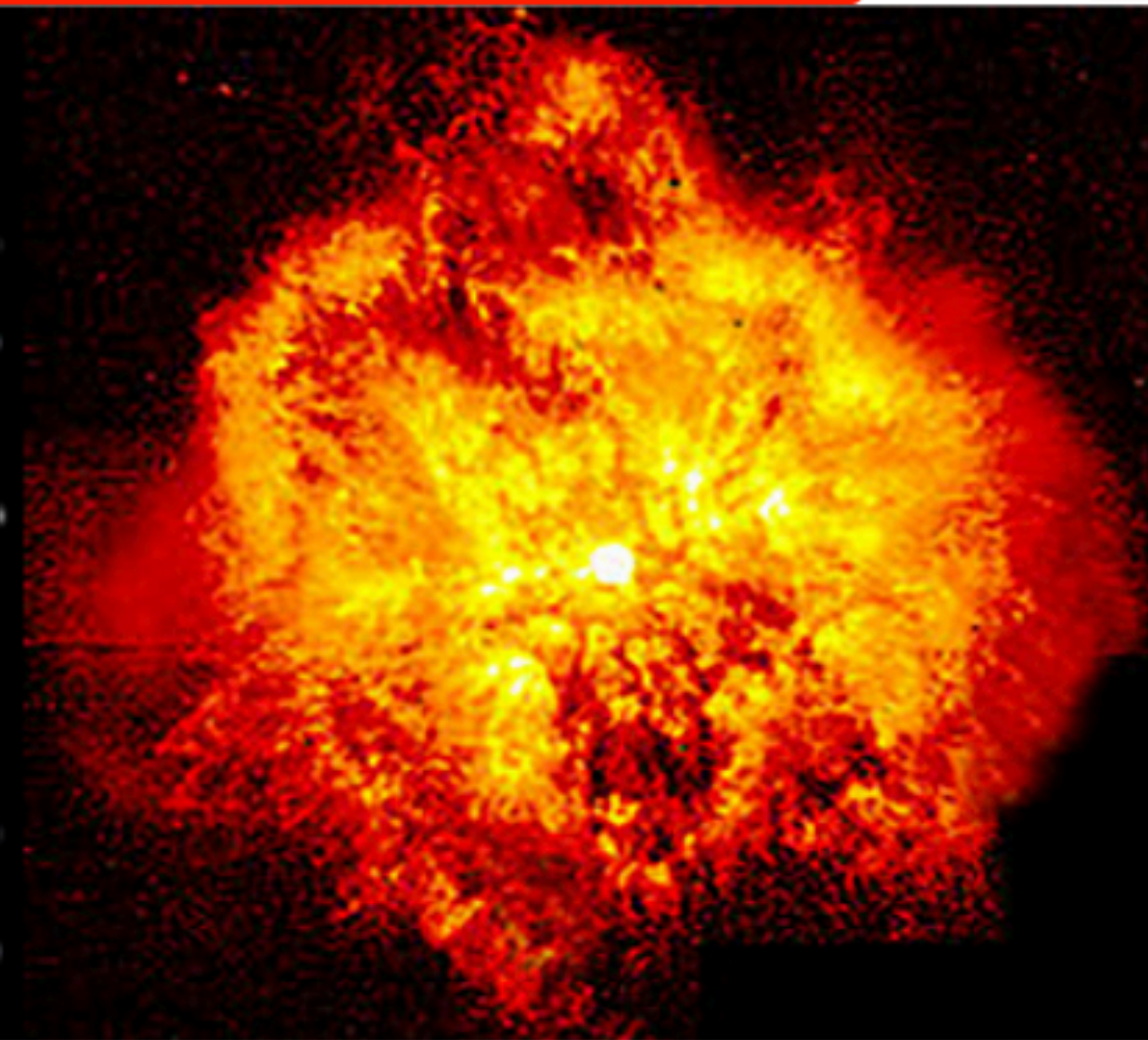


Evolution Yes



No ☐

BIG BANG
THEORY

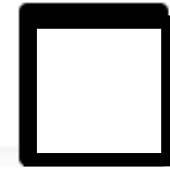


One Kind, Bible mentions.



Evolution

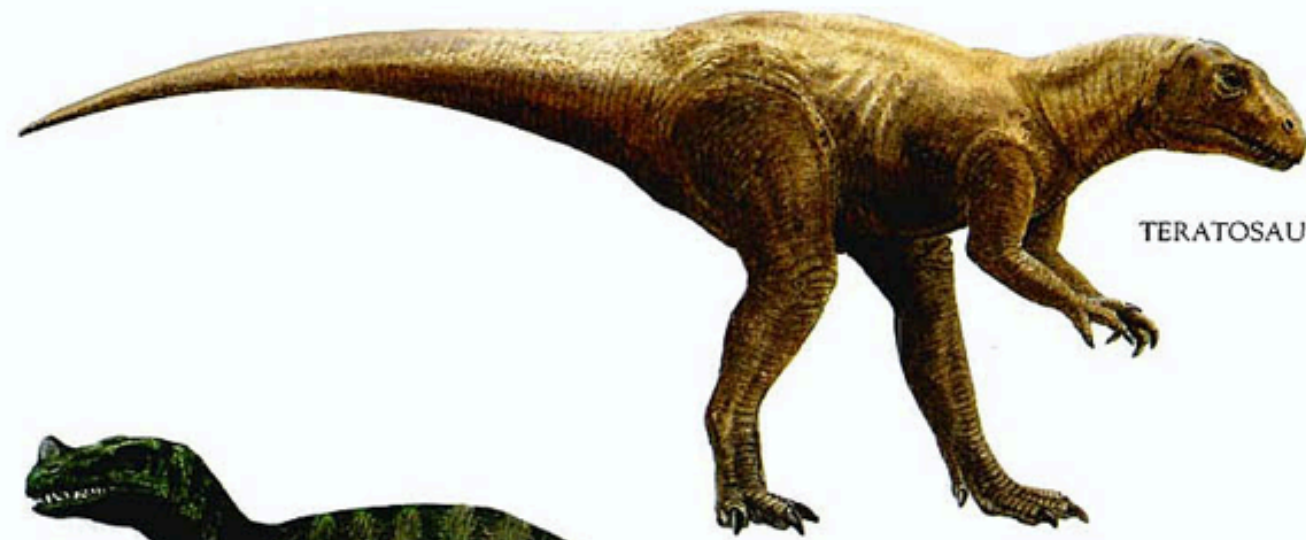
Yes



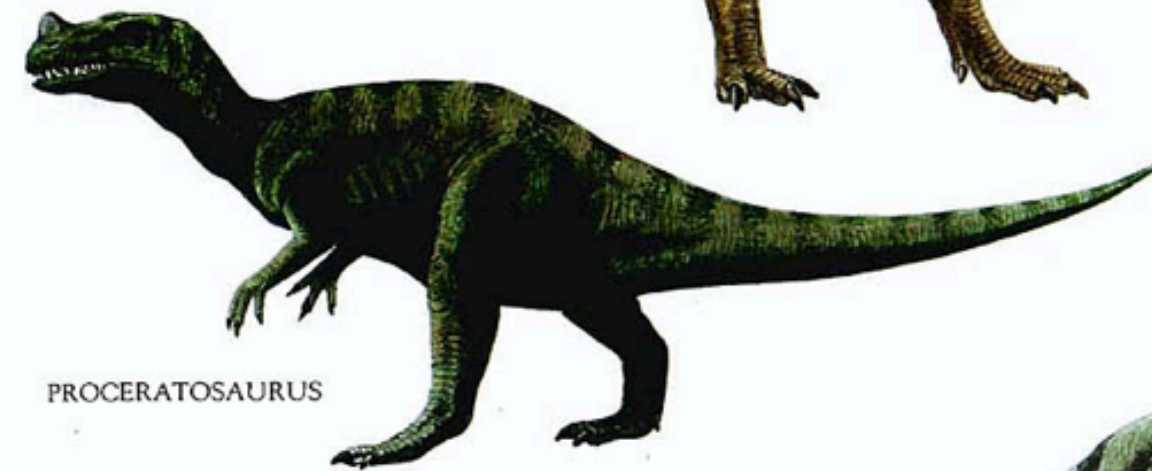
No



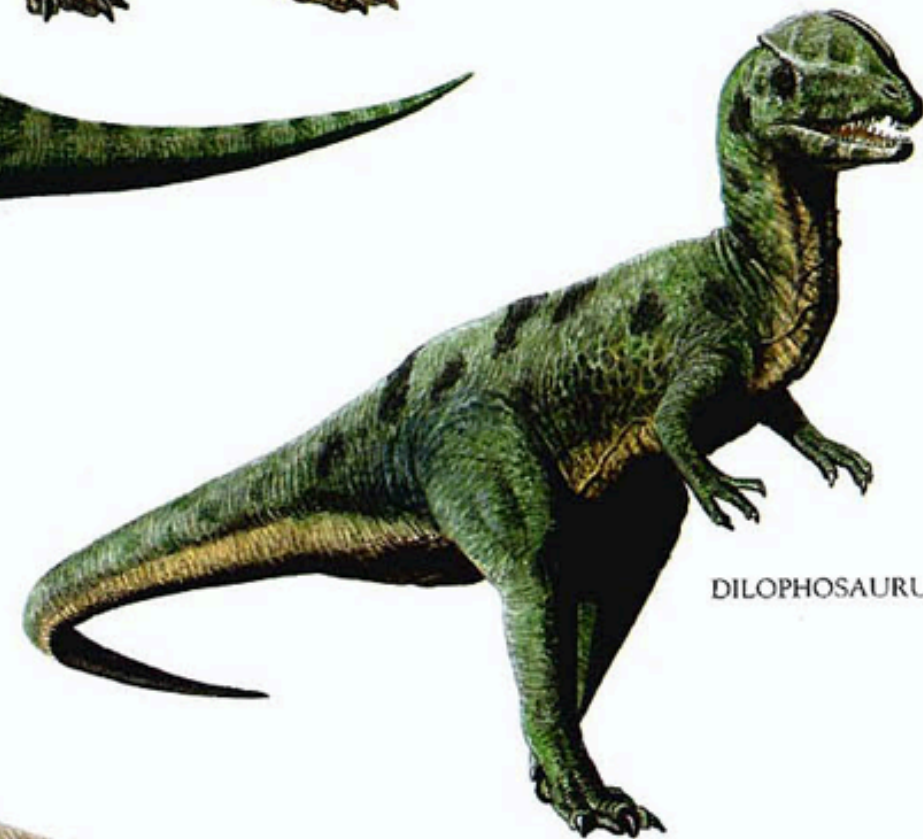
Large Carnivorous Dinosaurs



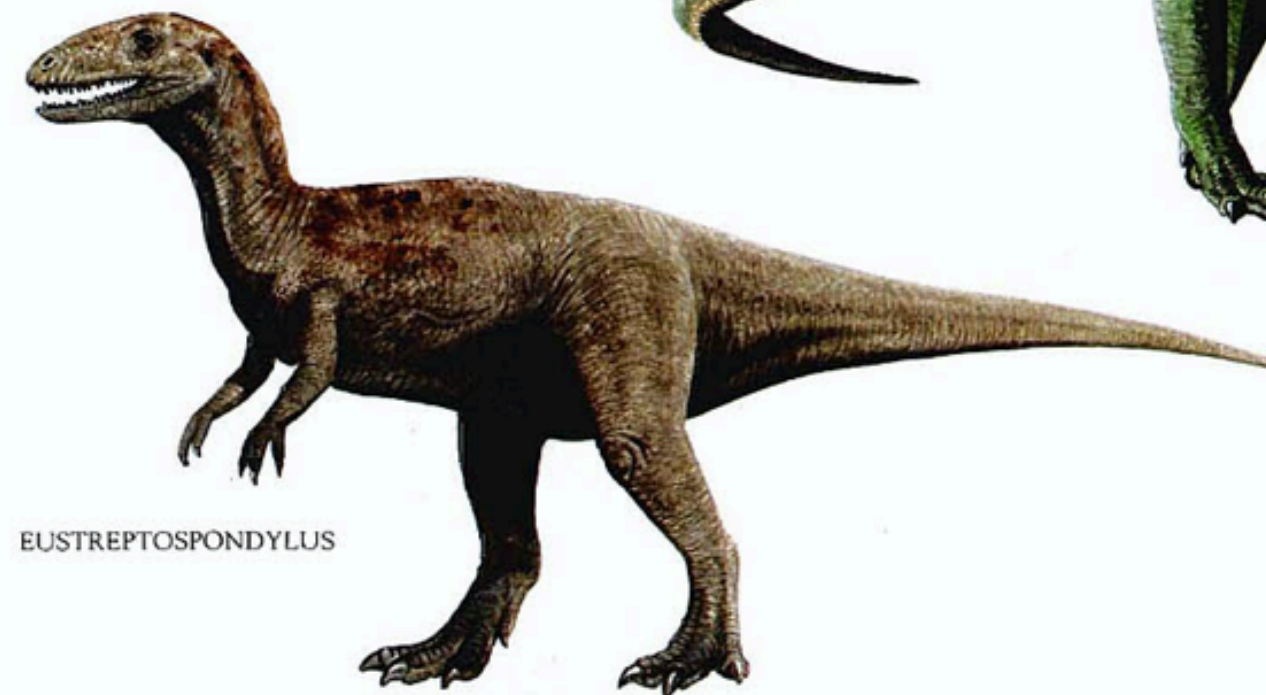
TERATOSAURUS



PROCERATOSAURUS



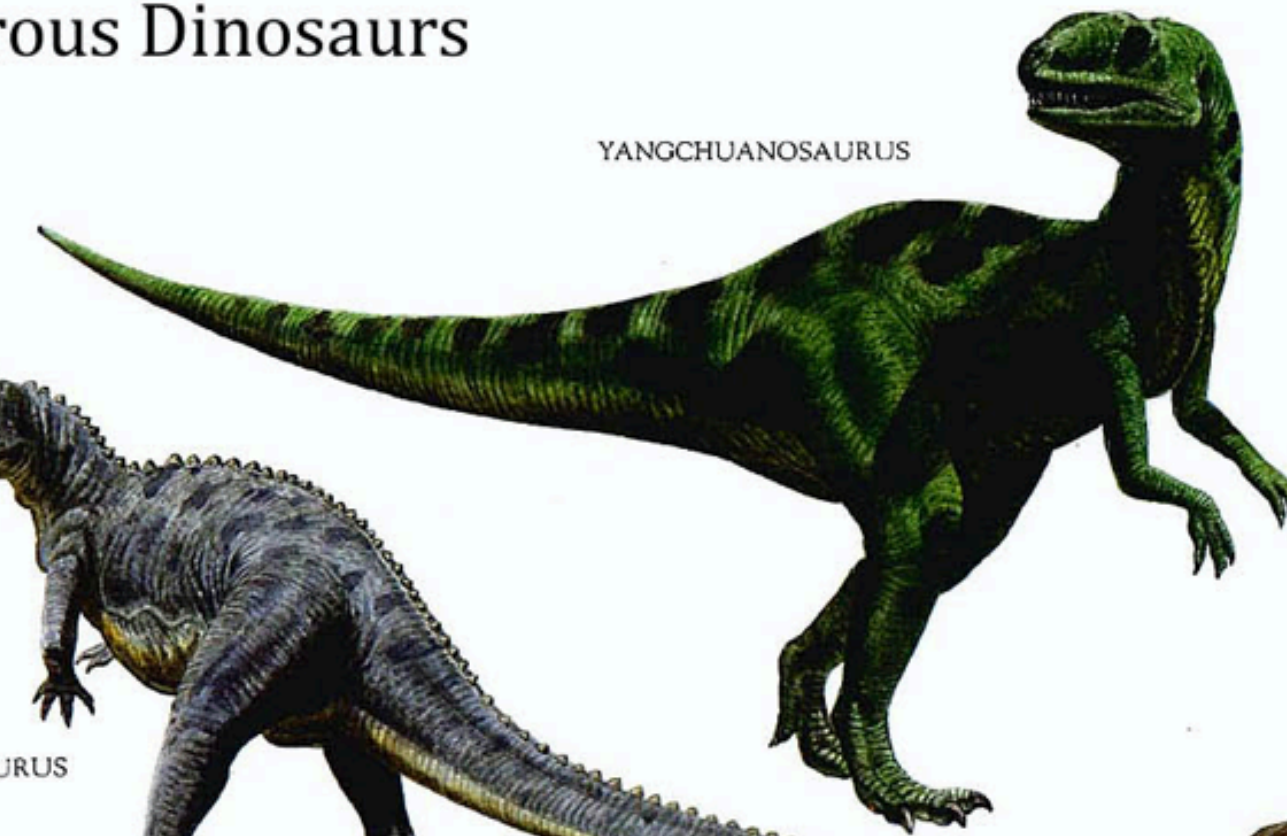
DILOPHOSAURUS



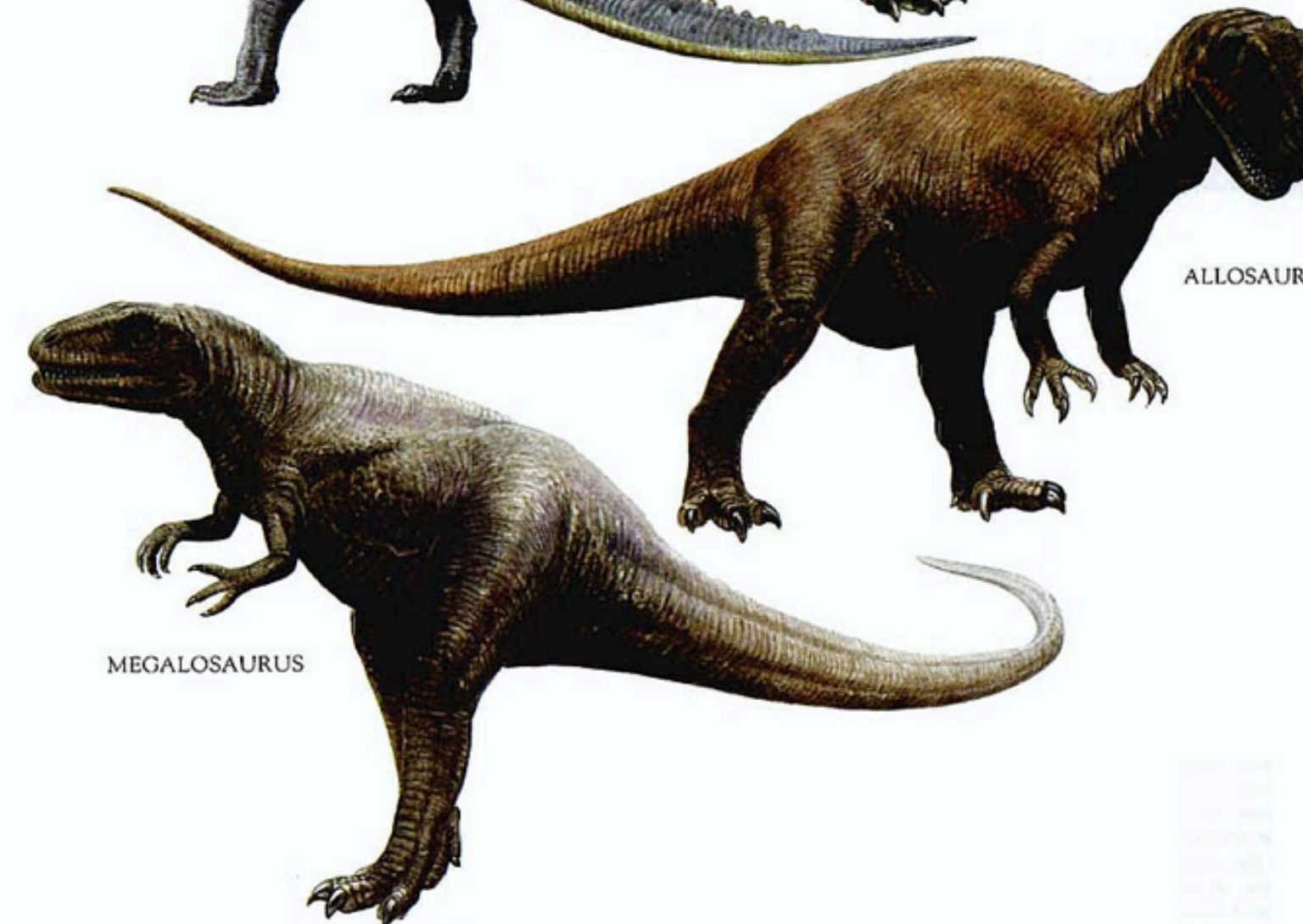
EUSTREPTOSPONDYLUS



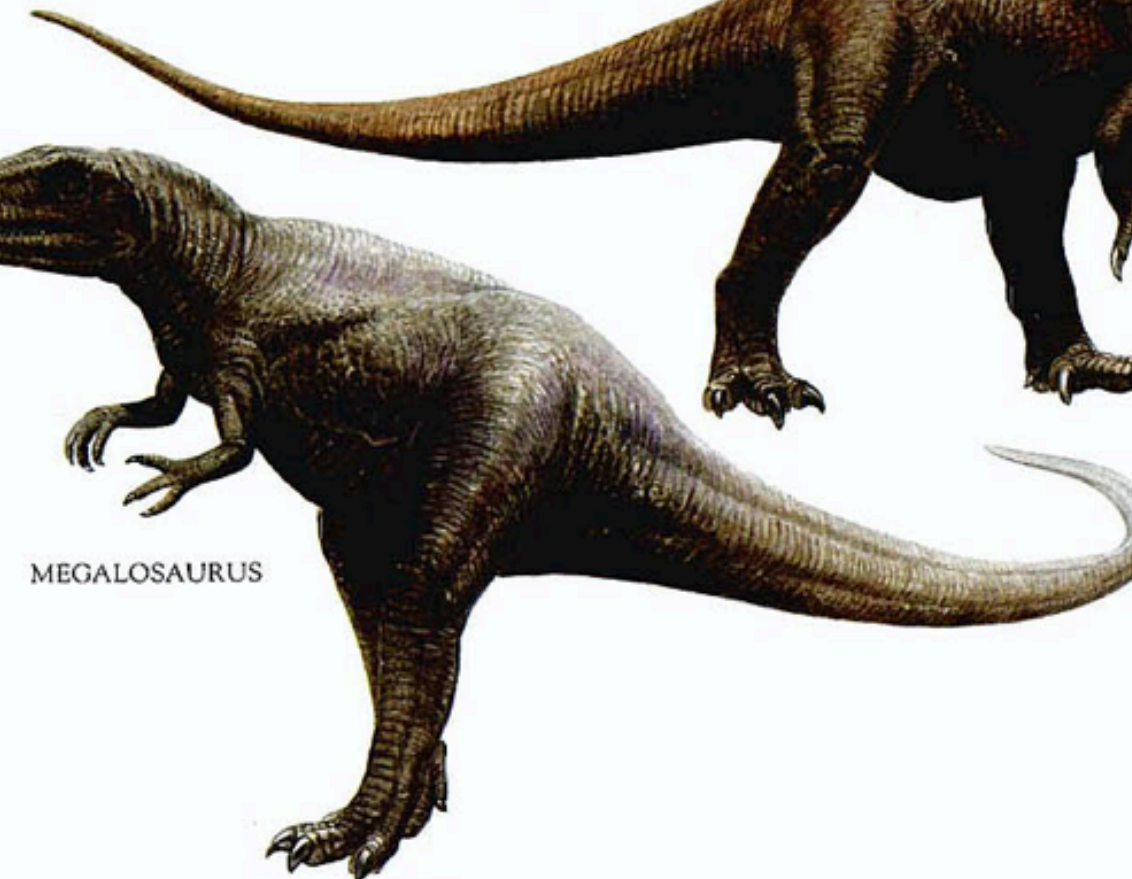
CERATOSAURUS



YANGCHUANOSAURUS



ALLOSAURUS



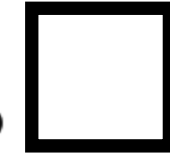
MEGALOSAURUS

Development Within One Kind



Evolution

Yes



No



Origin of Man from Lower Kind

Man Just an Evolved Animal.

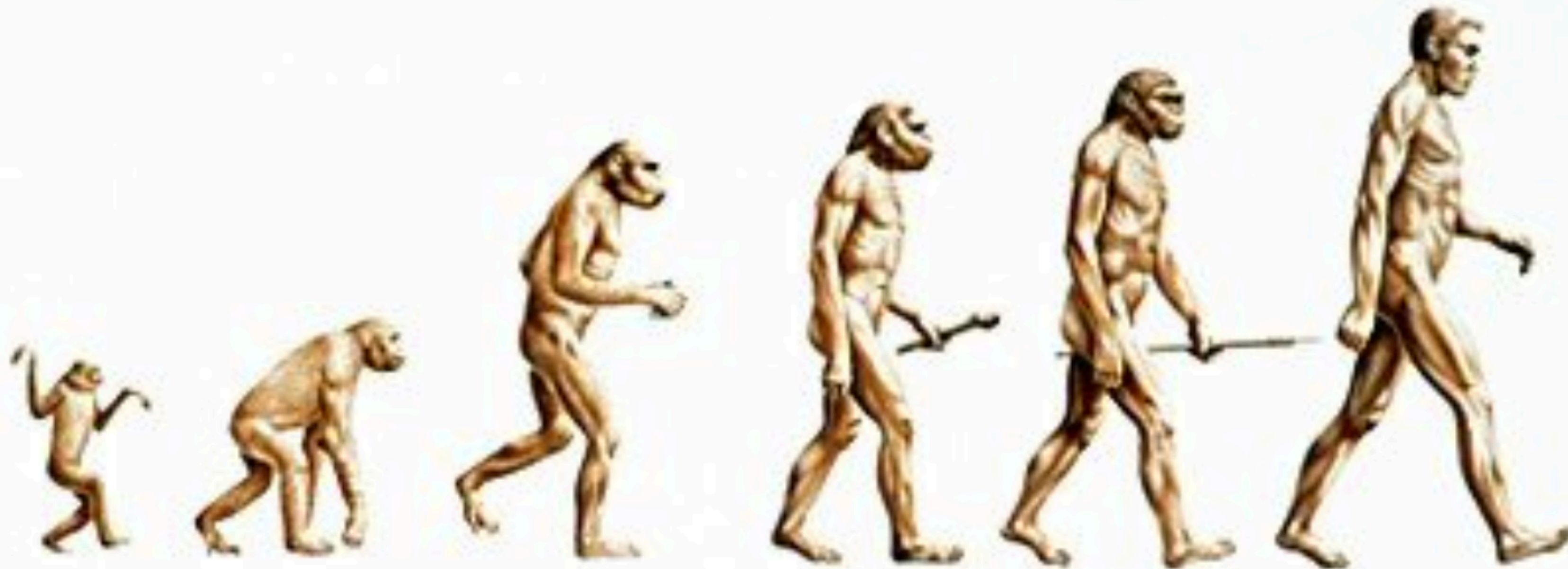
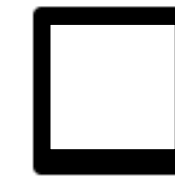


Evolution

Yes



No





Evolution Yes



No ☐

*“Eat, drink and be merry for
there is no tomorrow.”*

Bible Mentions Stars.

Formation of Star Do Not Evolve into Complex Planets with Life.

☒ Evolution Yes ☐ No ☒



Wolves and Dog Are Different Kinds.



Evolution Yes



No ☐



Are There Dogs Today Evolved from Wolves?

Days of Creation are 24-hr Days.

Used to Justify Bible and Evolution Are Both Correct.

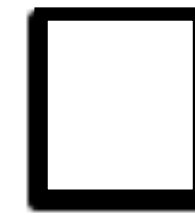


Evolution

Yes



No



*7 days of creation
represent millions
of years.*

An Old Earth Required for Theory of Evolution to Take Place.

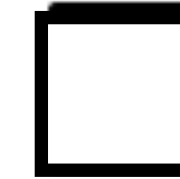


Evolution

Yes



No



Origin of Earth

4.6 billion years ago

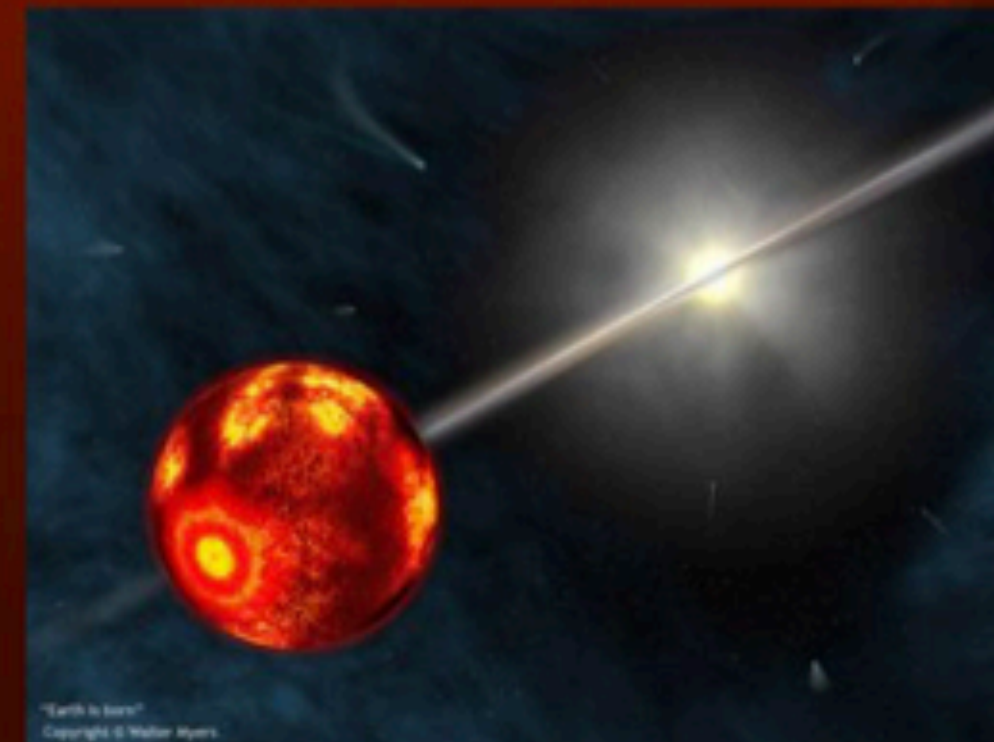
The sun and the planets coalesced out of a vast cloud of gas and dust

The Earth was a hot glowing ball of white hot gases.

Particles of gases were compressed together, giving off heat.

Gases cooled down so the Earth contracted and gases turned to liquids.

Heavy materials went to the center of the Earth and a liquid material went to the center.



Variety Within Kind is Not Evolution.

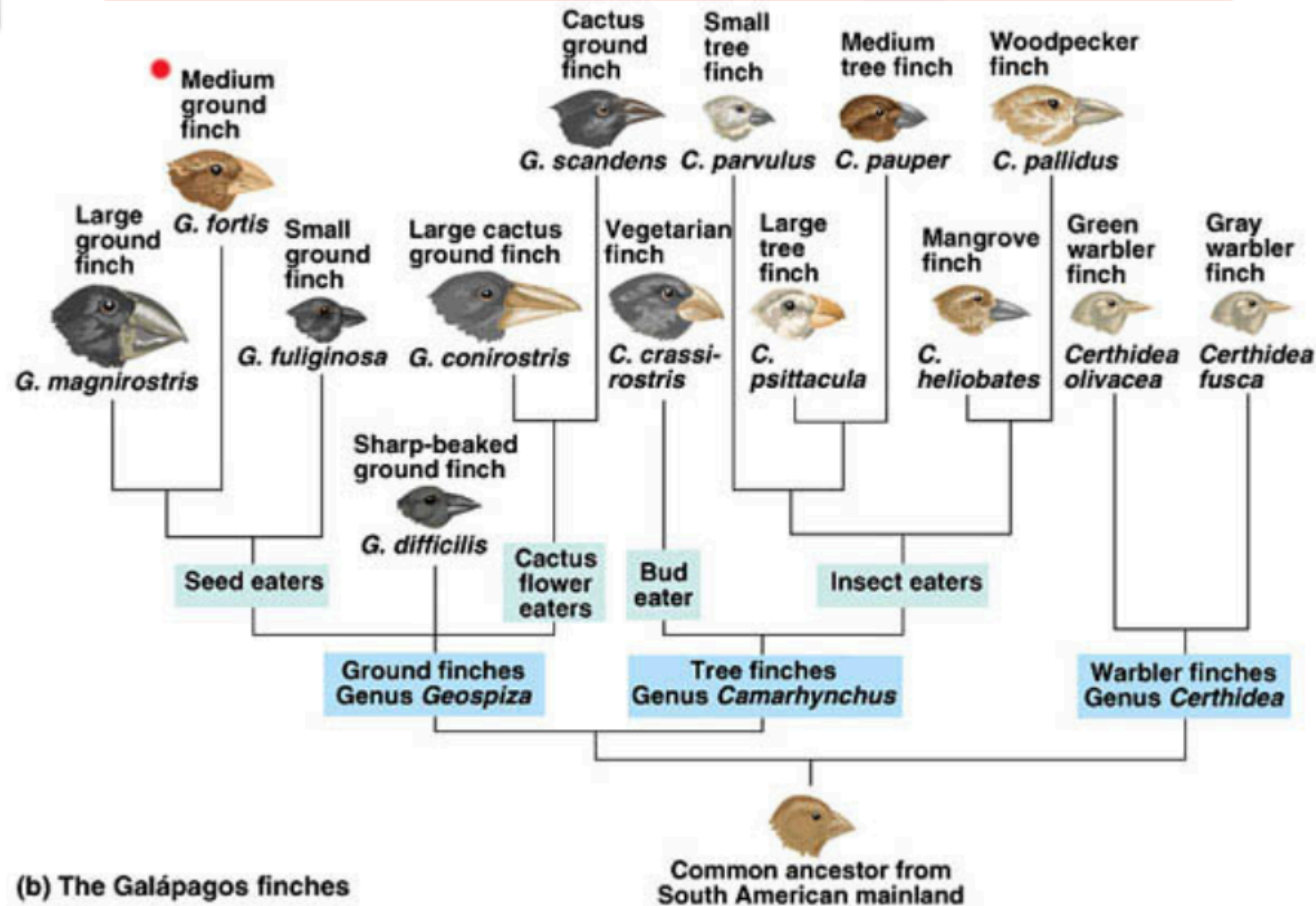


Evolution

Yes



No



(b) The Galápagos finches

Copyright © Pearson Education, Inc., publishing as Benjamin Cummings.

4. Define Creation.

Bringing into being the: earth, heavens, plants, animals & mankind by sudden creation described in first 2 chapters of Genesis.

5. What are 4 characteristics of Creation?

- a) Super naturalistic or God was the Creator.
- b) Externally directed.
- c) Had a purpose.
- d) Complete.

6. What is the evidence for creation?

1. Revelation.

2. Natural World -- Rom. 1:20.

7. How many times does the word God and references to God appear in Gen. 1-2:4?

50

8. When did creation start?

- In the Beginning.

9. How did God create
the Universe?

Spoke it into existence

10. How does Scripture describe what the world was like on the first day?

Formless, void, darkness was over the surface of the deep.

11. List the 18 specific things created in the 1st 6 Days.

Day 1

1. Matter
2. Light (energy)

Day 2

1. Sky

11. List the 18 specific things created in the 1st 6 Days.

Day 3

1. Dry Land
2. Seas
3. Vegetation
4. Plants yielding seed
5. Fruit Trees

Day 4

1. Sun
2. Moon
3. Stars

11. List the 18 specific things created in the 1st 6 Days.

Day 5

1. Great sea monsters
2. Water animals
3. Birds

Day 6

1. Cattle
2. Creeping Things
3. Beasts of the earth
4. Man & Woman

12. How long did it take for the fruit trees to grow on Day 3?

Created fully developed.

13. What are four functions for the lights in the expanse?

1. Separate the day from night.
2. Signs.
3. Seasons.
4. Days & years.

14. How was mankind
created relative to God?

In His Image.

15. What verse in the bible tells us that God's power and divinity are clearly seen in the natural world?

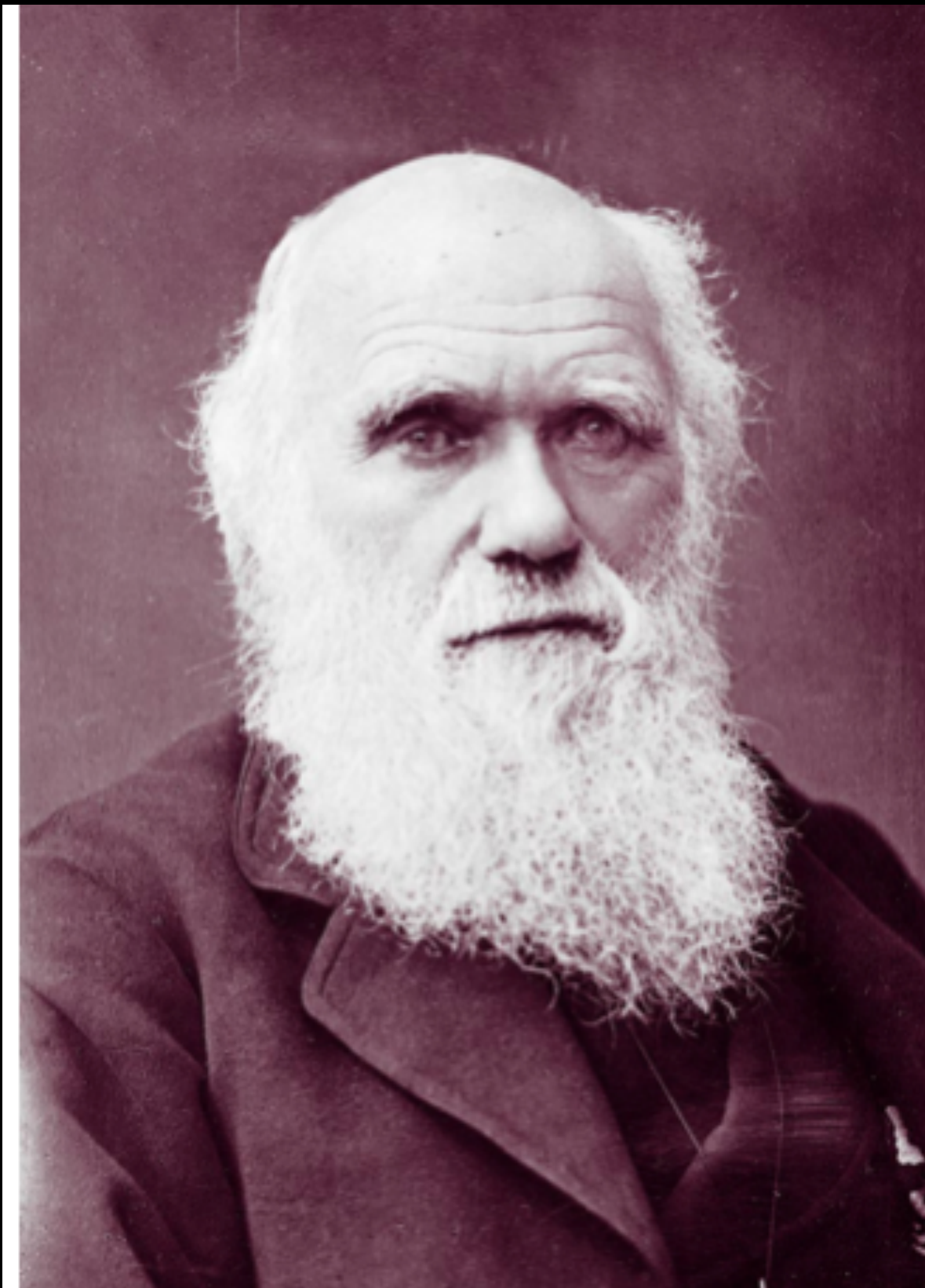
Rom. 1:20

16. Why was woman
created for man?

**To be his companion, he was
lonely, Gen. 2:18**

17. Who is the Father of Evolution?

- Charles Robert Darwin



18. What did Charles Darwin say was the most uncertain thing in His Theory?

Missing Links.

“Why then is not every geological formation and every stratum full of such intermediate links? Geology assuredly does not reveal any such finely graduated organic chain; and this, perhaps, is the most obvious and serious objection which can be urged against the theory.” , Charles Darwin, Origin of Species, Chapter 9.

19. What are 3 assumptions of Evolution?

- a) Life Began Before Intelligence.
- b) Matter Is Eternal.
- c) Best Naturally Survives (Natural Selection).

20. How old is the earth according to scientists? How old is the earth according to the Bible?

- 4.6 to 5.0 billion years old.
- Bible doesn't say.
 - ➔ Genealogies not complete but do indicate a young earth, 6-10 thousand years old.

21. Which of the following are the links between ape and man?

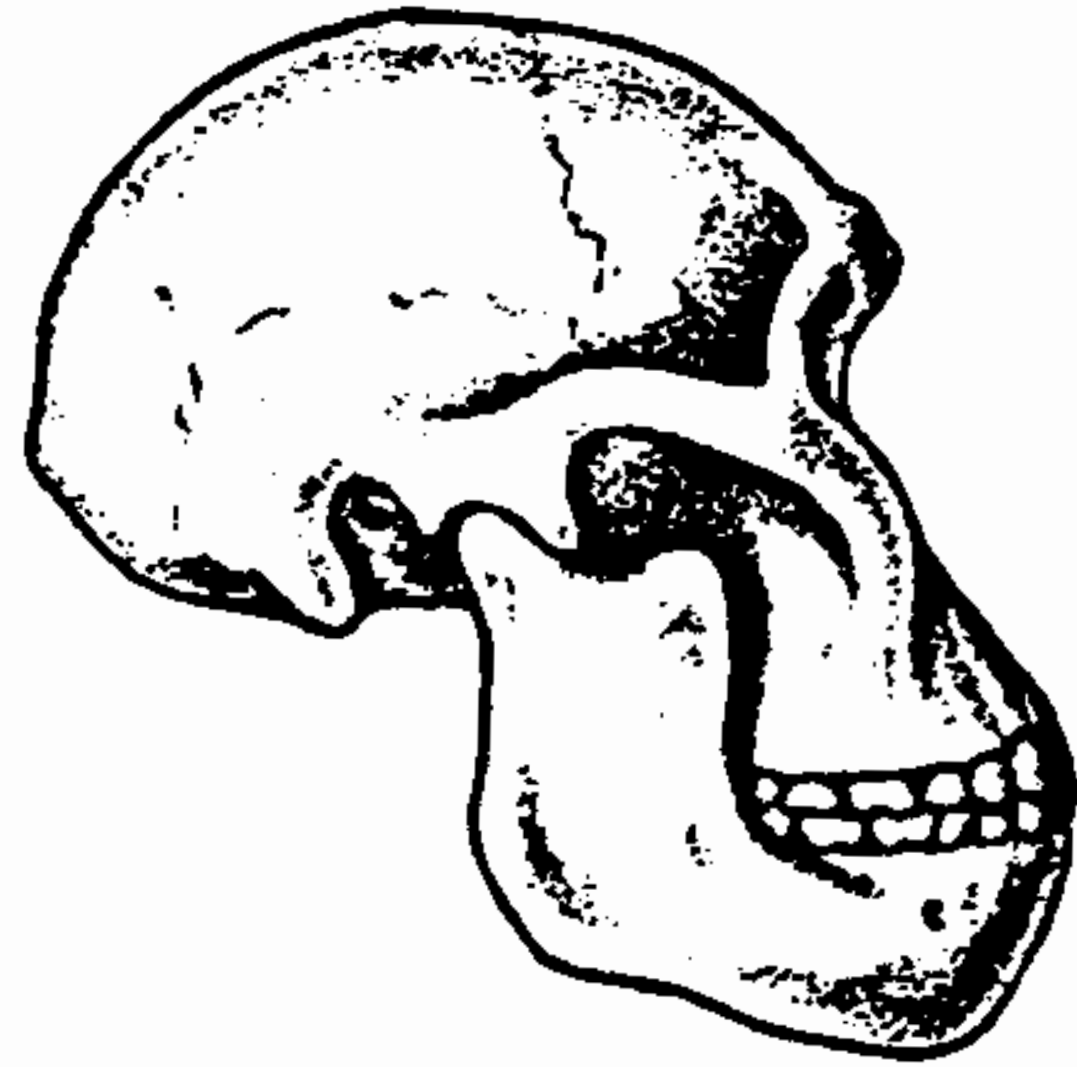
Ramaphithecus



- Fossil was found in India in 1934.
- Consisted of several teeth and jaw fragments.
- Fossil considered an hominid (individuals leading to man, but still sub-human).
- Ramapithecus is a basic kind of extinct apes.

No Missing Link. Ape.

Australopithecus

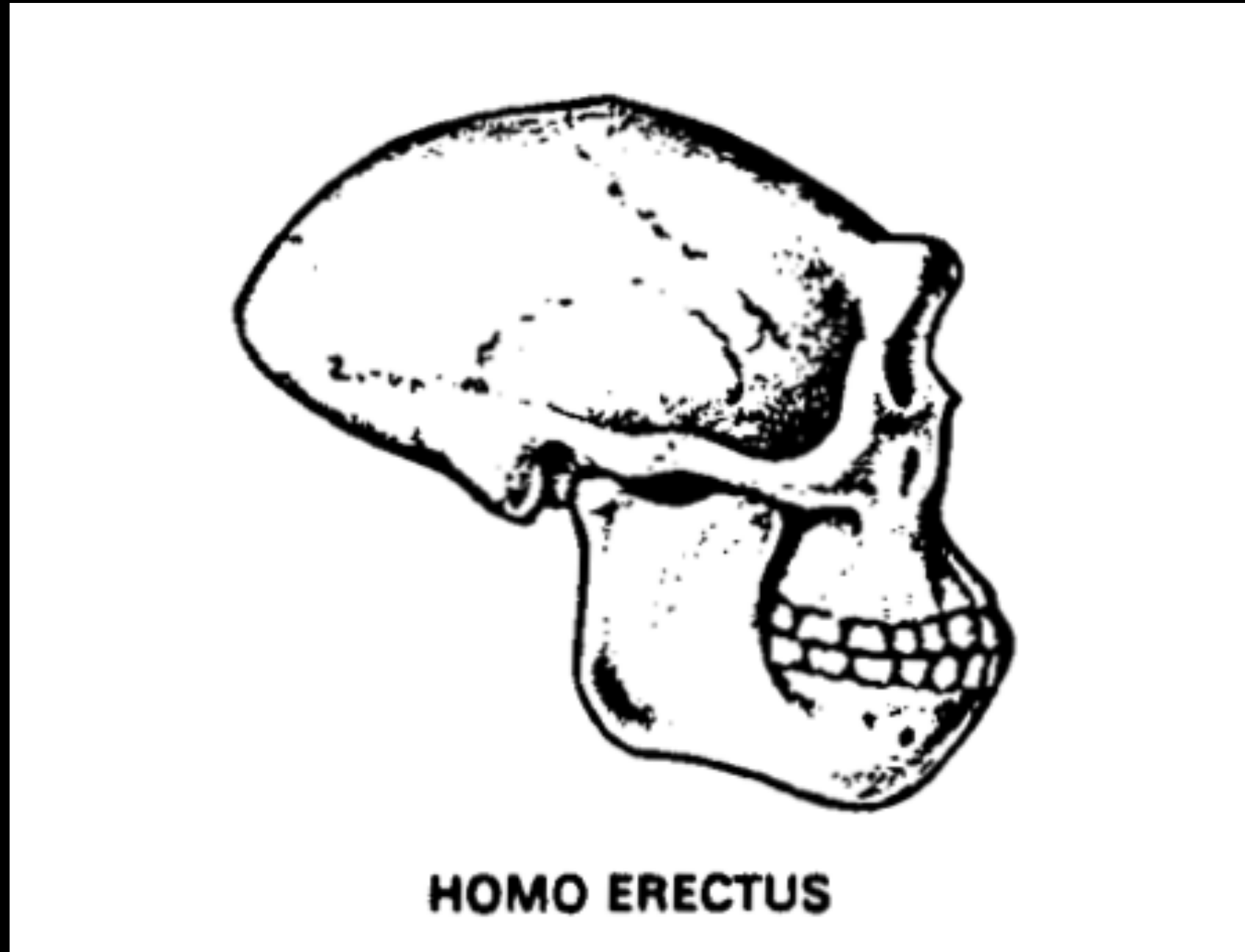


AUSTRALOPITHECUS

- Assigned to a considerable number of different fossils.
- Found mostly in East Africa by Louis Leakey, others.
- Supposed lived 2-3 million years ago, walked erect and used crude tools.
- 500 cc brain size (comparable apes); teeth similar to Ramapithecus.
- Limb bone fossils indicate long-armed and short-legged.
- Baboon in Ethiopia today; similar teeth and jaw characteristics as Ramapithecus and Australopithecus.

No Missing Link. Ape.

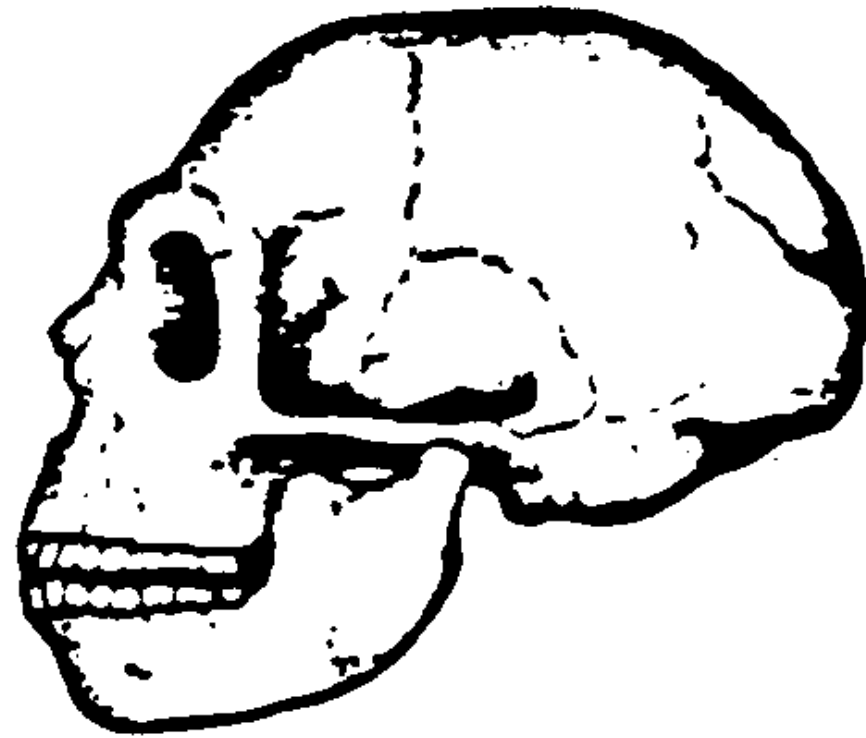
Homo Erectus



- Homo Erectus includes: Java Man, Peking Man, Heidelberg Man, and Meganthropus.
- Suppose lived about 500,000 years ago, walked upright, brains of about 1000 cc and simple implements and weapons.
- Two human skulls were found along with fossils for the Java man. Fossils consist of a skullcap, a thigh bone) and three teeth.
- Bones of Peking Man disappeared during World War II.
- Heidelberg Man consisted solely of a large jaw.
- Meganthropus consisted of two larger jaw bones and four teeth, and has been assigned by many to Australopithecus.

No Missing Link. Man.

Neanderthal Man



This Neanderthal skull
from La Chapelle-aux-
Saints was

- Most famous of the "missing links".
- Pictured as a stooped, brutish, heavy brow ridges and the crudest of habits.
- No longer any doubt was truly human.
- No more different from modern man than the various tribes of modern man.
- Brain capacity was certainly human.
- Stooped skeletal structure likely due to disease, possibly arthritis or rickets.

No Missing Link. Man.

22. What is the Law of Biogenesis? Does it conflict with evolution?

- ➔ Life began from life.
- ➔ Yes. Evolution says life came from non-life.

23. In a cause-effect relationship (physics), can the effect be greater than the cause? How does this relationship impact the creation of the universe and the debate of Creation vs. Evolution?

* No - cause always greater.

Cause-Effect Relationship

Cause

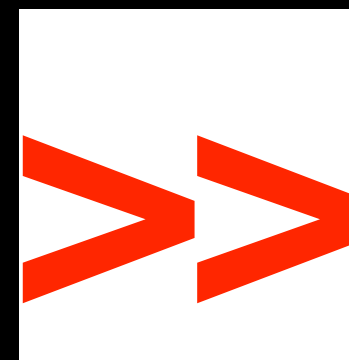


Effect

- Develop A Design.
- Purchase Wood.
- Use Electric Saw.
- Assemble.
- Finish.



Cause



Effect

Cause-Effect Relationship

Cause



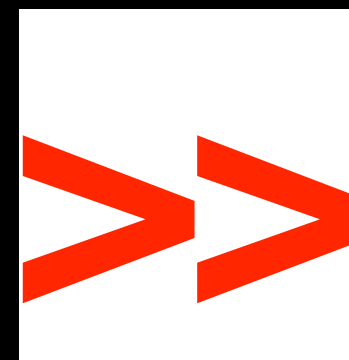
Effect

Universe

- God - Infinite Power



Cause



Effect

24. What is Intelligent Design? Does this support Evolution or Creation?

- The theory of intelligent design holds that certain features of the universe and of living things are best explained by an intelligent cause, not an undirected process such as natural selection.
- Supports Creation, Heb. 3:4.

Einstein Quote

- “the harmony of natural law ... reveals an intelligence of such superiority that, compared with it, all the systematic thinking and acting of human beings is an utterly insignificant reflection”, **Ideas and Opinions -- The World as I See it, Albert Einstein, New York: Bonanza Books, 1974, pg. 40.**

25. What historical event had a tremendous impact on how the earth looks today?

Genesis Flood.

26. List 6 consequences of believing in Evolution?

1. Evolution destroys faith in the Bible, Jesus and God.
2. Might makes right.
3. The Super Race.
4. Evolution is atheism.
5. Evolution produces immorality.
6. Evolution encourages racial prejudice.